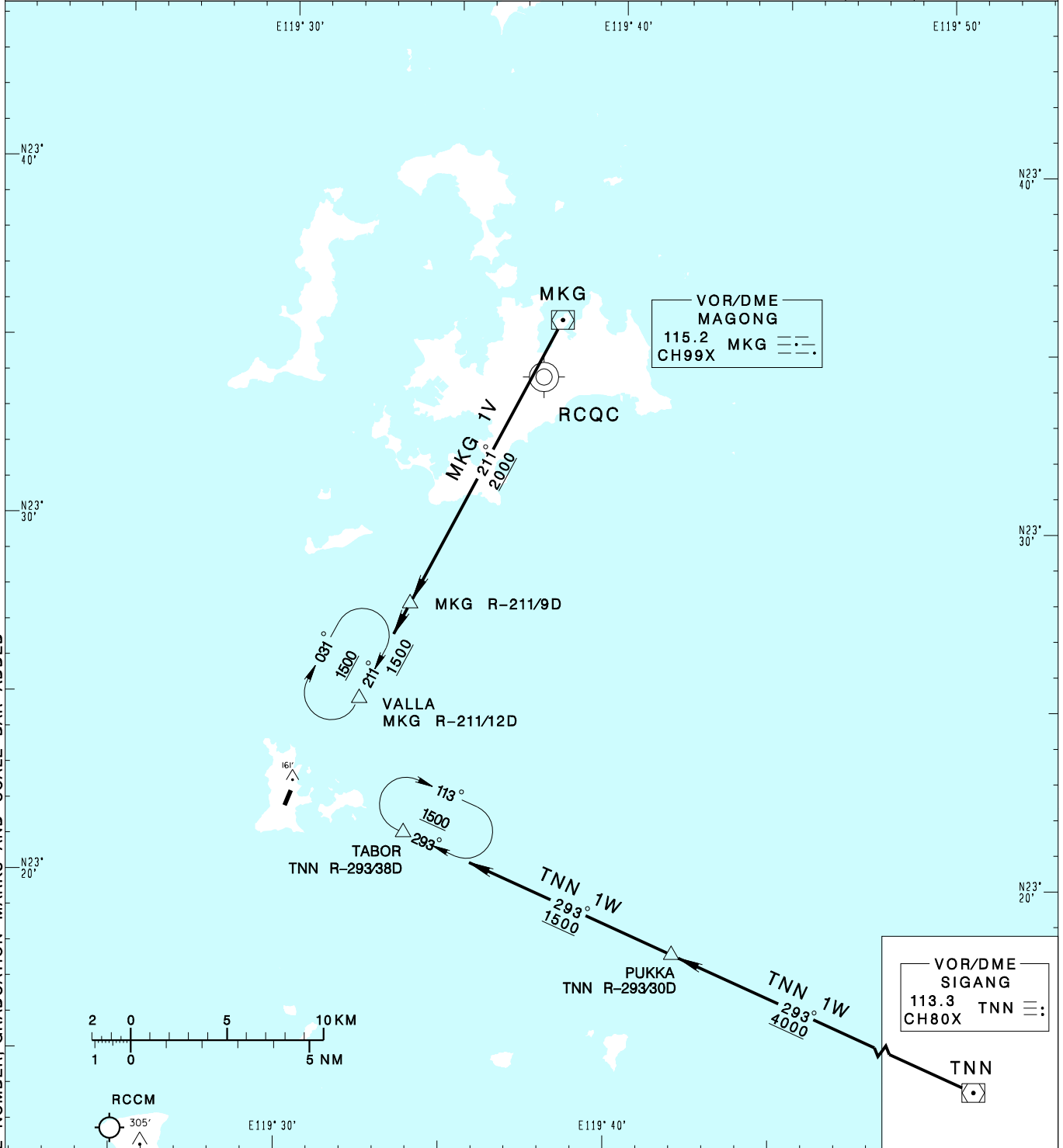


**望安機場**  
WANG-AN AD

RCWA STAR  
MKG 1V  
TNN 1W

KAOHSIUNG APP 128.1 129.9		WANG-AN TWR 118.9		VAR 4° W  MSA MKG VOR 25NM
Apt Elev: 114'		Trans Level: FL130		
Trans Alt: 11,000'				
BEARINGS ARE MAGNETIC; DISTANCES ARE NAUTICAL MILES; ELEVATIONS, HEIGHTS IN FEET				



CHANGES: NEW PAGE NUMBER, GRADUATION MARKS AND SCALE BAR ADDED

**MAGONG ONE VICTOR ARRIVAL**  
Depart MKG, track MKG R-211 to VALLA.

**SIGANG ONE WHISKEY ARRIVAL**  
Depart TNN, track TNN R-293 to PUKKA, then TABOR.

**NOTE**  
MKG 1V: If unable to maintain VFR before VALLA, maintain 1,500ft and hold at VALLA.  
TNN 1W: If unable to maintain VFR before TABOR, maintain 1,500ft and hold at TABOR.